

Outbreaks of Illness: 2015 End of Year Report

Outbreaks occur when there is an increase in the number of disease cases, above what would normally be expected within a specific place or group of people and within a certain period of time. In 2015, 106 outbreaks were investigated by the Maricopa County Department of Public Health (MCDPH). Of those 106 outbreaks, 23 were later ruled out. This report describes trends and provides summary statistics for outbreaks that were reported to and occurred only in Maricopa County[‡]. For information regarding multi-jurisdictional and national outbreaks, please visit the Arizona Department of Health Services website: <http://www.azdhs.gov/>. For more information, please contact the Office of Epidemiology at MCDPH (602) 372-2605.

[‡] Outbreaks involving single cases of communicable disease without local transmission are not included in this report. Please visit MCDPH's Health Statistics and Reports webpage: <http://www.maricopa.gov/publichealth/Services/EPI/Reports/default.aspx>.

Characteristics of Reported Outbreaks: Maricopa County, 2015

Year Total*	Number of Persons Ill per Outbreak [†]	Total Persons Affected by Outbreaks [†]	Hospitalizations [†]	Deaths [†]	Demographics	
					Average % Gender [†]	Age Ranges [†]
83	1 = Minimum 92 = Maximum 8 = Median	1,236	68	3	45% = Female 30% = Male 25% = Unknown	4 (<1%) = Less than 1 year 31 (2%) = 1-4 years 122 (10%) = 5-9 years 59 (5%) = 10-19 years 64 (5%) = 20-49 years 80 (7%) = 50-74 years 120 (10%) = >74 years 746 (61%) = Unknown

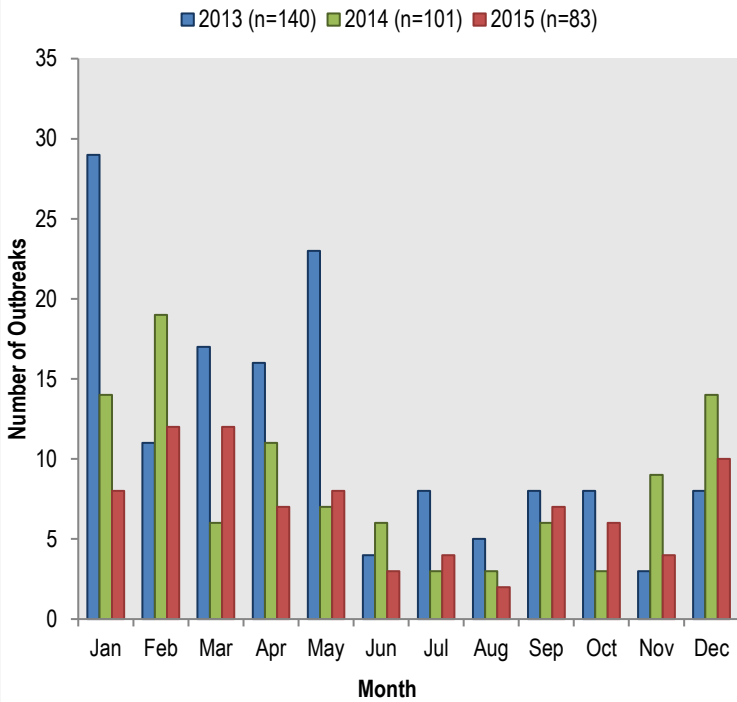
*23 reported outbreaks were later ruled-out and not included in this summary

[†]For cases whom information was available

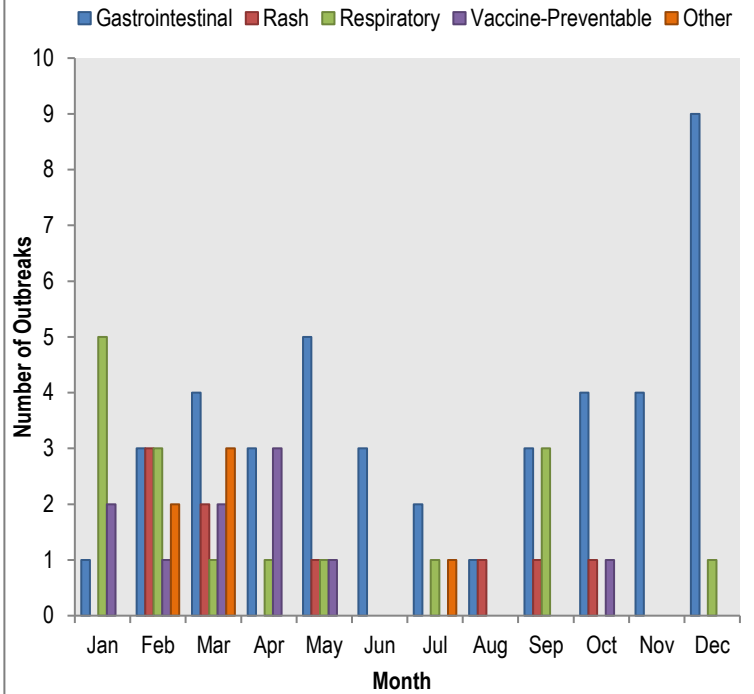
2015 Outbreaks by Etiology

Gastrointestinal	42 (51%)	Rash	9 (11%)
<i>Clostridium difficile</i> (C.diff)	1 (2%)	Parvovirus B19 (Fifth Disease)	1 (11%)
<i>E. coli</i>	2 (5%)	Scabies	7 (78%)
Norovirus	14 (33%)	Rash- Unknown Type	1 (11%)
<i>Giardia</i>	1 (2%)		
<i>Salmonella</i>	4 (10%)	Respiratory	16 (19%)
<i>Shigella</i>	6 (14%)	Influenza	6 (38%)
Gastrointestinal- Unknown Type	14 (33%)	Legionella	2 (12%)
		Respiratory Syncytial Virus (RSV)	1 (6%)
Other	6 (7%)	Strep Throat (Type A, non-invasive)	3 (19%)
Conjunctivitis	2 (33%)	Respiratory- Unknown Type	4 (25%)
Hand, Foot, and Mouth Disease	2 (33%)		
Head Lice	2 (33%)	Vaccine-Preventable	10 (12%)
		Pertussis	9 (90%)
		Varicella	1 (10%)

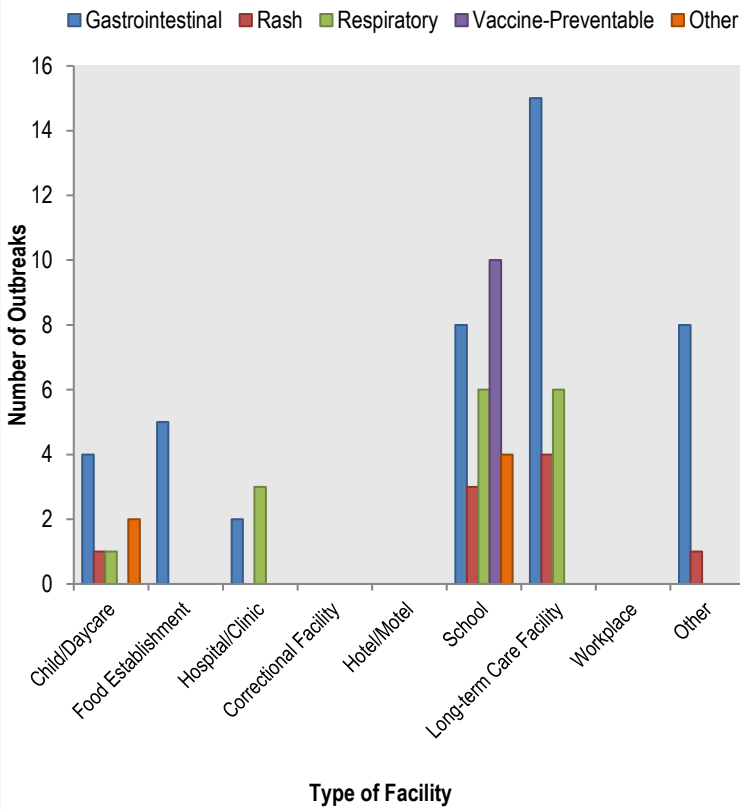
Number of Outbreaks Reported by Month 2013-2015



Number of Outbreaks Reported by Type and Month 2015 (n=83)



Number of Outbreaks by Type and Facility 2015 (n=83)



Gastrointestinal Outbreaks by Etiology 2015 (n=42)

