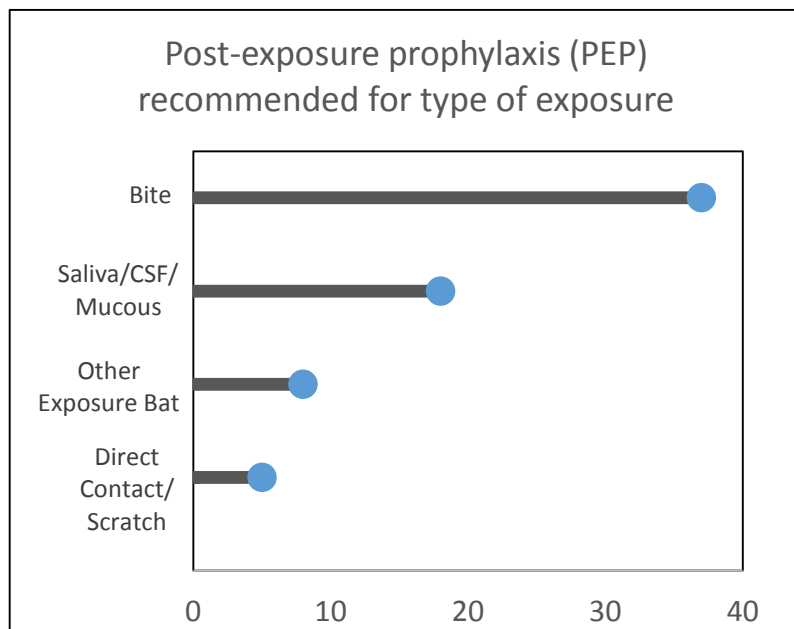
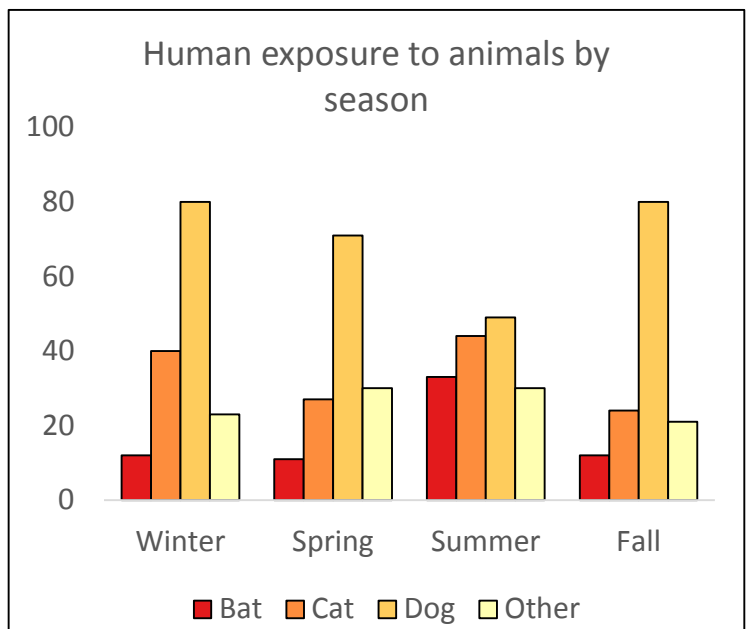
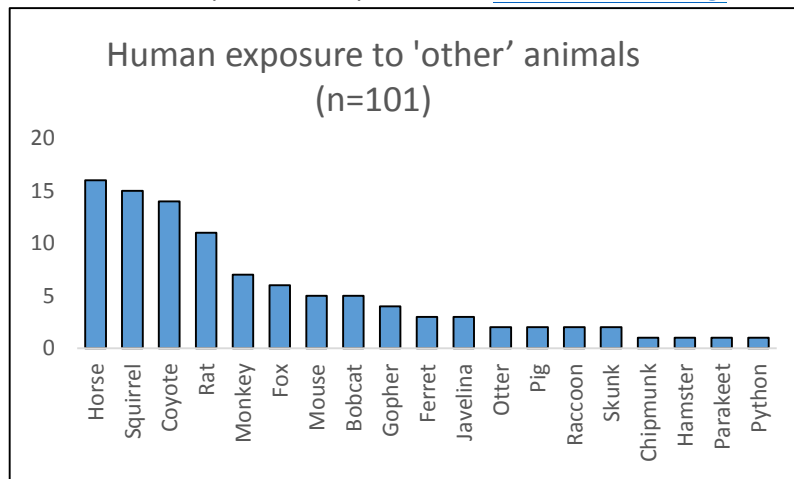
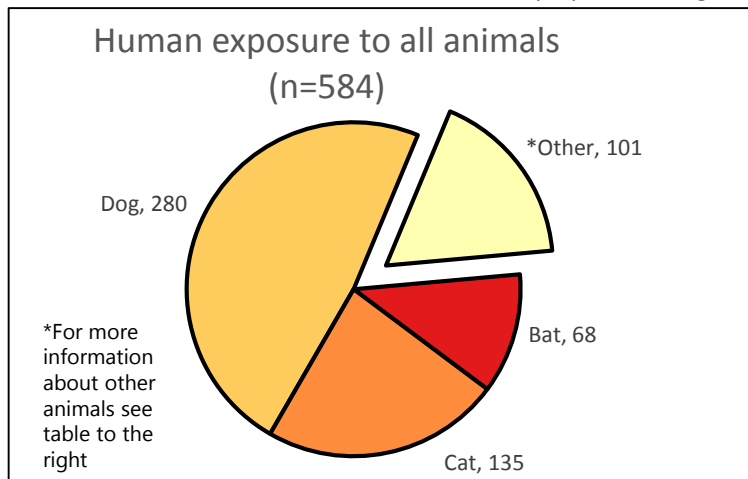


# Maricopa County Rabies Assessment 2016

## End of Year Report

Maricopa County Department of Public Health (MCDPH), Office of Epidemiology, has a comprehensive surveillance system that tracks the number of rabies risk assessments conducted. The number of assessments conducted has declined over the last 5 years. The number of recommendations for post exposure prophylaxis in 2016 was 73, which was higher than the 5 year average of 50.4. For information about rabies transmission, symptoms, diagnosis, treatment, and prevention, please visit [www.mcrabies.org](http://www.mcrabies.org).

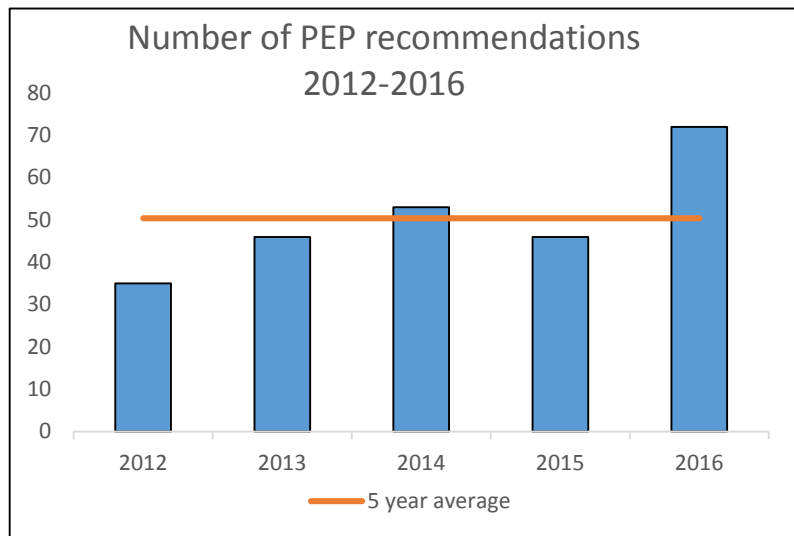


**PEP was recommended for 68 (12%) rabies assessments in 2016**

**Species indicated in PEP recommendation by MCDPH**

Bat	27	Horse	9
Bobcat	2	Javelina	3
Cat**	5	Monkey	3
Coyote	9	Otter	1
Dog**	9	Raccoon	1
Fox	2	Skunk	2

\*\*Dog and cat exposures occurred in instances of animal interaction with wildlife or in areas outside of Maricopa County where domestic animal rabies occurs



**To report a suspected rabies case or to receive a rabies assessment call  
(602) 747-7111 (24 hours a day)**