

Outbreaks of Illness: 2011 End of Year Report



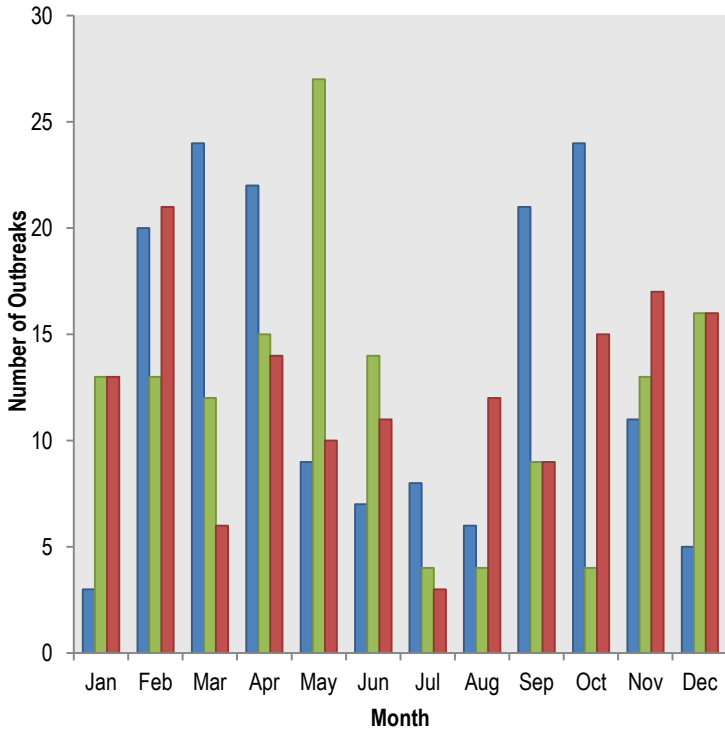
Outbreaks occur when there is an increase in the number of disease cases, above what would normally be expected within a specific place or group of people and within a certain period of time. In 2011, 148 outbreaks were investigated by Maricopa County Department of Public Health (MCDPH). Of those 148 outbreaks, 1 was ruled out. This report describes trends and provides summary statistics for outbreaks occurring in Maricopa County in 2011. For more information, please contact the Office of Epidemiology at MCDPH (602) 372-2605.

Characteristics of Reported Outbreaks: Maricopa County, 2011	
Year Total*	Number of Persons Ill per Outbreak†
147	2 =Minimum 190 =Maximum 8 =Median
<small>*1 reported outbreak was later ruled-out and not included in this summary †For cases whom information was available</small>	

2011 Outbreaks by Etiology			
Gastrointestinal	75 (51%)	Respiratory	21 (14%)
E. coli	1 (1%)	Influenza	3 (2%)
Giardia	1 (1%)	Influenza-like Illness	4 (2%)
Norovirus	39 (26%)	Mycoplasma Pneumonia	1 (1%)
Salmonella	7 (5%)	Respiratory Syncytial Virus (RSV)	1 (1%)
Gastrointestinal- Unknown Type	27 (18%)	Strep Throat (Type A, non-invasive)	6 (4%)
		Respiratory- Unknown Type	6 (4%)
Other	17 (11%)		
Conjunctivitis	5 (3%)	Vaccine-Preventable	25 (17%)
Hand, Foot, and Mouth Disease	7 (5%)	Pertussis	2 (1%)
Head Lice	4 (2%)	Varicella	23 (16%)
Mercury Contamination	1 (1%)		
Rash	9 (6%)		
Staphylococcal Skin Infection	1 (1%)		
Scabies	8 (5%)		

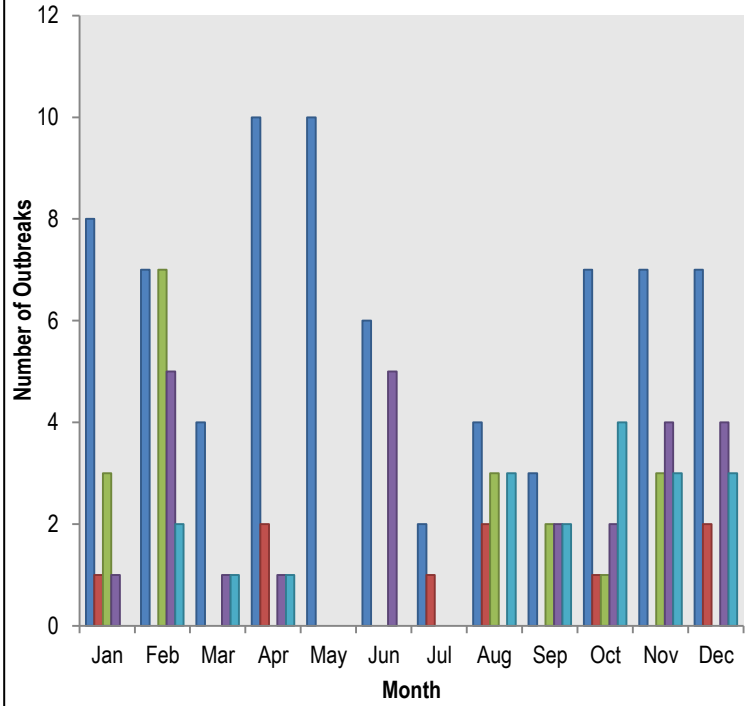
Number of Outbreaks Reported by Month 2009-2011

■ 2009 (n=160) ■ 2010 (n=144) ■ 2011 (n=147)



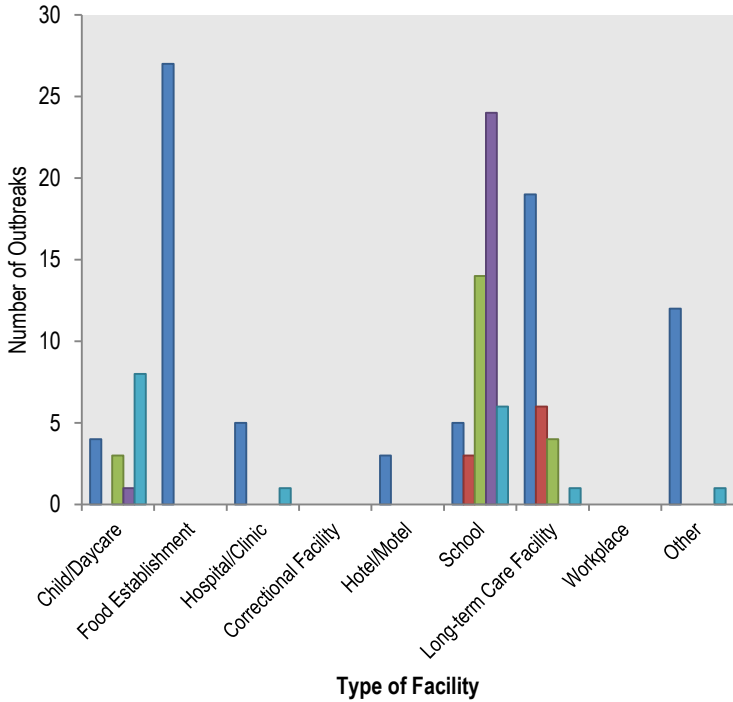
Number of Outbreaks Reported by Type and Month 2011 (n=147)

■ Gastrointestinal ■ Rash ■ Respiratory ■ Vaccine-Preventable ■ Other



Number of Outbreaks by Type and Facility 2011 (n=147)

■ Gastrointestinal ■ Rash ■ Respiratory ■ Vaccine-Preventable ■ Other



Percentage of Gastrointestinal Outbreaks by Etiology 2011

